



Charbonneau Festival of the Arts

*Your annual membership also
gives you festival benefits:*

- Free Admission to the Opening Night Gala Reception & Silent Auction.
- Discounted entry into the Festival Fine Art Gallery or Artisan Shows
- Recognition along with sponsors and donors in our publicity write-ups and at the festival

CONTACT

P.O. Box 1313
Wilsonville, OR 97070
info@CharbonneauArts.org
www.CharbonneauArts.org

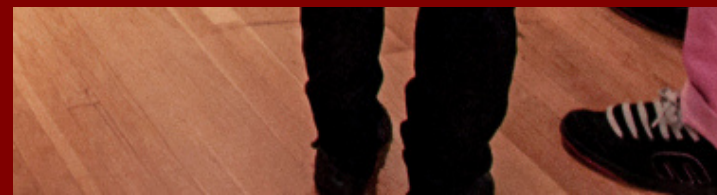
*The Charbonneau Arts Association is a non-profit 501(c)(3) organization that supports public art education programs in local high schools. Your contribution is tax deductible to the extent allowed by law and makes you eligible to participate in the tax credit program of the Oregon Cultural Trust, www.culturaltrust.org. Donor information is not shared with or sold to any outside organization. Federal ID# 47-4653404



Charbonneau *Arts*



the Friends of
CHARBONNEAU ARTS



JOIN US

The Friends of Charbonneau Arts is an annual, tax-deductible* membership that helps to support the arts programs at Canby and Wilsonville High Schools. Membership offers benefits such as free admission to the Festival of the Arts Opening Gala and Silent Auction, and an opportunity to be recognized, along with major sponsors, as a supporter of the arts, and of student art in particular. Funds raised by Charbonneau Arts Association are used by Canby and Wilsonville art teachers to support student entries into regional and state scholastic art competitions, pay students' admissions to art galleries, to purchase needed supplies, and more.



MEMBERSHIP

Membership Levels

Individual - \$25

Family - \$45

(No more than 2 adults and any children living in the same household)

Get started by selecting a membership level and filling out the remaining information needed.

Memberships can be accepted online by credit card or by returning the form with your check.

APPLY ONLINE

www.charbonneauarts.org/friends

SEND BY MAIL

Name

Contact Number

Address

Email

Membership Options

Subscription period: 1 year. No recurring payments.

☐ **Individual \$25**

☐ **Family \$45**

No more than 2 adults and any children living in the same household.

Return this form with your check payable to "Charbonneau Arts Association" to:

Charbonneau Arts Association

PO Box 1313

Wilsonville, OR 97070

- *Credit card subscription payments can be sent online.*